



**ENTERPRISE ARCHITECT**

User Guide Series

# Archetype Modeling Language (AML)

Author: Sparx Systems

Date: 2026-05-27

Version: 17.1

CREATED WITH  **ENTERPRISE  
ARCHITECT**

# Table of Contents

Archetype Modeling Language (AML)	3
-----------------------------------	---

# Archetype Modeling Language (AML)

## Design Expressive and CIMI Compliant Clinical Models

Enterprise Architect is integrated with the Archetype Modeling Language (AML).

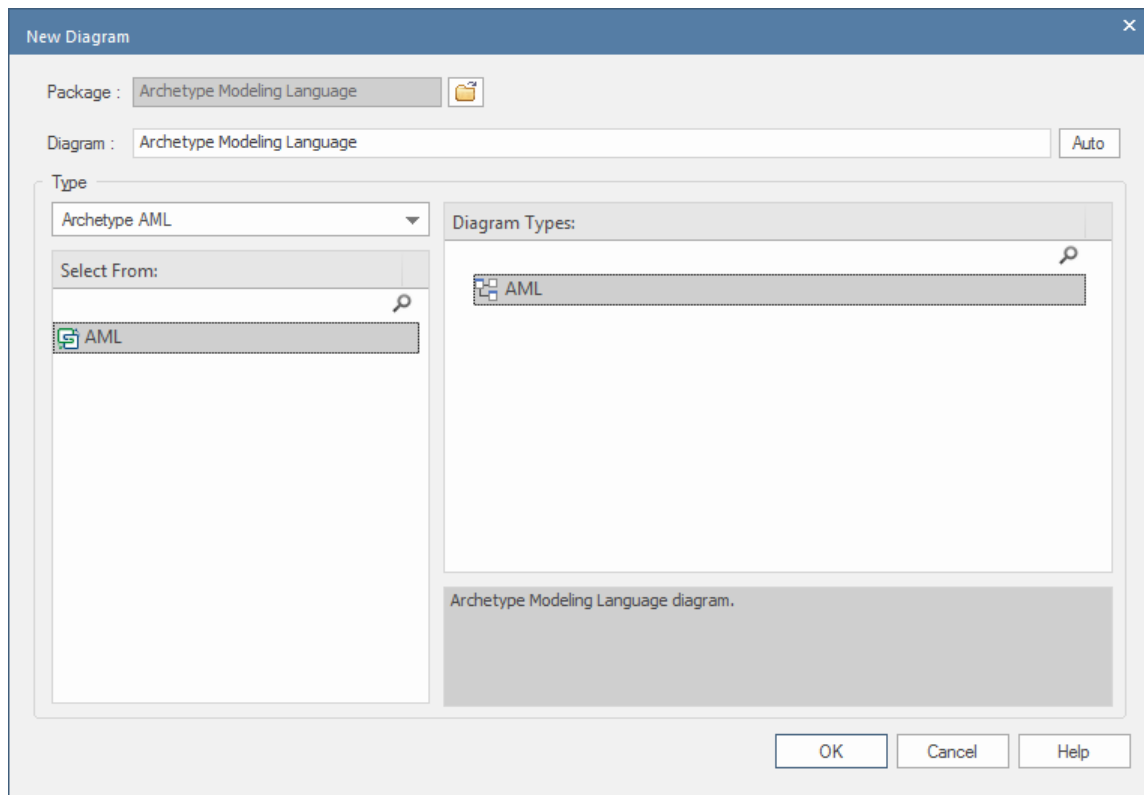
This text is derived from the 'Object Management Group (OMG) Archetype Modeling Language (AML) Specification' (Version 1.0, May 2015).

"The AML defines a standard means for modeling Archetype Models (AMs) to support the representation of Clinical Information Modeling Initiative (CIMI) artifacts using modeling profiles as defined in the UML. Archetype Models are Platform Independent Models (PIMs) and are developed as a set of constraints on a specific Reference Model (RM)."


The AML is specified by three UML profiles collectively meeting the requirements of archetype modeling:

- Reference Model
- Constraint Model
- Terminology Binding Model

This image illustrates the selection of the 'AML' diagram type in the 'New Diagram' dialog.



## Access

On the Diagram Toolbox, click on  to display the 'Find Toolbox Item' dialog and specify 'Archetype Modeling Language'.

Ribbon	Design > Diagram > Toolbox
Keyboard Shortcuts	Ctrl+Shift+3

## AML Integration

Facility	Description
AML in Enterprise Architect	<p>Developing Archetype Modeling Language (AML) diagrams in Enterprise Architect is quick and simple. The AML facilities are provided in the form of:</p> <ul style="list-style-type: none"><li>• An AML diagram type, created through the 'New Diagram' dialog</li><li>• An 'Archetype Modeling Language' page in the Diagram Toolbox, providing AML elements (stereotyped UML elements)</li><li>• AML element and relationship entries in the 'Toolbox Shortcut Menu' and Quick Linker</li></ul>

